

BRACHYCEPHALIC OBSTRUCTIVE AIRWAY SYNDROME (BOAS)

THIS AFFECTS BREEDS
WITH A SHORTER
SKULL & MUZZLE

**AVAILABLE AT OUR
MEOPHAM HOSPITAL**

OUTPATIENTS WELCOME



WHICH BREEDS ARE AFFECTED?

The most distinctive feature of these breeds is their shorter & wider skull & muzzle.

Any breed of dog or cat with a brachycephalic head conformation can be affected.

Here are a list of the most common breeds affected:

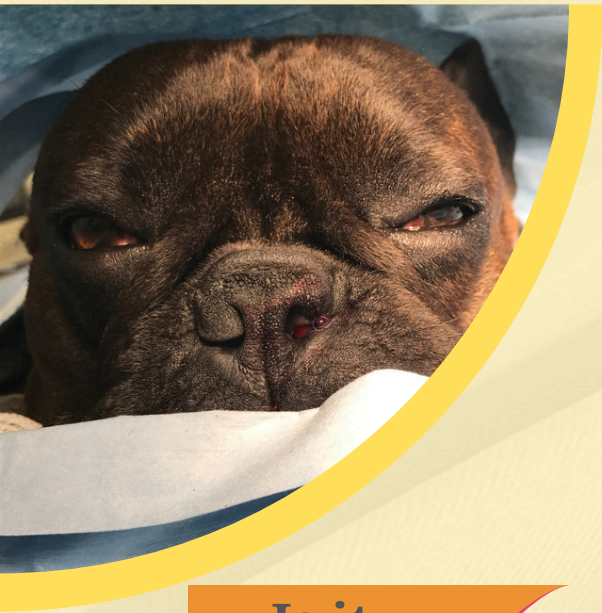
- Bulldog
- French Bulldog
- Pug
- Boxer
- Boston Terrier
- Lhasa Apso
- Shih Tzu
- Japanese Chin
- Pekingese
- Cavalier King Charles Spaniel



WHAT IS BOAS?

This is the name given to the effects of the passage of air through the upper airway of dogs with shortened heads/flattened faces. The structures within the airways are squashed and can block the airways.

This in turn affects the animals ability to breathe.



How is it treated?

BOAS is not curable, however upper airway corrective surgery can provide a better quality of life.

General anaesthesia in these breeds can be associated with increased risk.

Here at Meopham Veterinary Hospital we perform this procedure on a regular basis.

We have dedicated, on-site 24hour care and advanced patient monitoring to ensure recovery is as safe as possible.

In some instances a CT scan or other further investigations may be appropriate before a surgery recommendation is made.

Is it BOAS?

Diagnosis is made based on factors such as breed, head conformation & vet assessment.

We will perform a trotting exercise test to see your dogs response to exercise.

Upper airway obstruction is usually evident as snorting or snoring noises.

BRACHYCEPHALIC = SHORT HEAD= USUALLY NORMAL LOWER JAW & ABNORMALLY SHORT UPPER JAW

CONTACT US



01474 815333



enquiries@meophamvets.co.uk



www.meophamvets.co.uk/brachycephalic-obstructive-airway-syndrome-boas/



MEOPHAM VETERINARY HOSPITAL

DA13 0QG

WHAT 3 WORDS LOCATION

///HILL.LOVE.HAVING

