

# Veterinary Emergencies

As a Hospital we provide a first class out of hours emergency service on site for our clients.

We have nurses on site 24 hours a day, 7 days a week, 365 days a year so your pets are never alone.

We also provide home visits if required.

If you require emergency treatment outside of practice opening hours then please do not hesitate to contact us on:

**Meopham** 01474 815333  
**Sevenoaks** 01732 740999  
**Swanscombe** 01322 381999  
**Tonbridge** 01732 798300

The Pet Health Club is not an insurance policy. As a practice we still recommend you get appropriate life time insurance cover for your pets.

Any puppies entered on the plan will be placed in the weight band for their expected weight when a fully grown adult.

Please ensure your address and contact details are kept up to date with us in order to avoid any delays with your deliveries (for direct debit payers only)

Sevenoaks  
Veterinary Surgery

Swanscombe  
Veterinary Surgery

Tonbridge  
Veterinary Surgery

Meopham Veterinary Hospital



# Pet Health Club

The monthly payment plan saving you money on your pet's care.

Available for new and existing clients for dogs, cats and rabbits. No age restrictions.

**MEOPHAM  
VETERINARY HOSPITAL**  
01474 815333  
[www.meophamvets.co.uk](http://www.meophamvets.co.uk)

**SEVENOAKS  
VETERINARY SURGERY**  
01732 740999  
[www.sevenoaksvets.co.uk](http://www.sevenoaksvets.co.uk)

**SWANSCOMBE  
VETERINARY SURGERY**  
01322 381999  
[www.swanscombevets.co.uk](http://www.swanscombevets.co.uk)

**TONBRIDGE  
VETERINARY SURGERY**  
01732 798300  
[www.tonbridgevets.com](http://www.tonbridgevets.com)



*'Care and Excellence'*

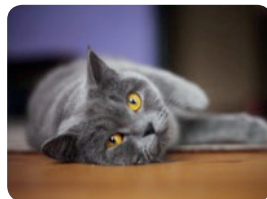
# Pet Health Club Explained



We have designed our Pet Health Club so that you, the pet owner, can ensure your pet receives the very best quality in preventative treatments. This simple, monthly, direct debit payment covers essential treatments for your pet's needs throughout its life time.

This enables you to spread the cost of providing the best possible healthcare over the year whilst benefiting from fantastic discounts.

Anything not included in our plan is sold at normal practice prices.



Other discounts and offers cannot be used in conjunction with this plan.

	Small Dog <10kg	Medium Dog 10-25kg	Large Dog 25-40kg	Giant Dog >40kg	Cat	Rabbit
Monthly Cost	£18.50	£21	£23	£31	£17	£11
Annual Health Check and Vaccination						
Kennel Cough Vaccination						
A Year's Supply of Flea Treatment (& Lungworm prevention for dogs)						
A Year's Supply of Worming Treatment						
Six Month Health Check with a qualified nurse						
Tick Cover						
Free Insurance Form Completion						
Total Plan Cost	£222	£252	£276	£372	£204	£132
Total Savings of up to	£106.60	£179	£211.45	£368.85	£70.20	£38.95

\*\*\*Additional 10% discount applied if you wish to pay in full, annually\*\*\*

## PLUS

- Postage of products included for direct debit customers (not including rabbit plan members)
- Full access to 24 hour on site emergency care
- Microchip Implantation (if required)
- Two options available - oral or spot on plan
- Member discount applied to dental procedures
- 10% discount on neutering, including laparoscopic neutering
- 20% discount on nail clipping and anal gland emptying, with a nurse
- 5% discount on food stocked
- 10% discount on Rearguard for rabbits